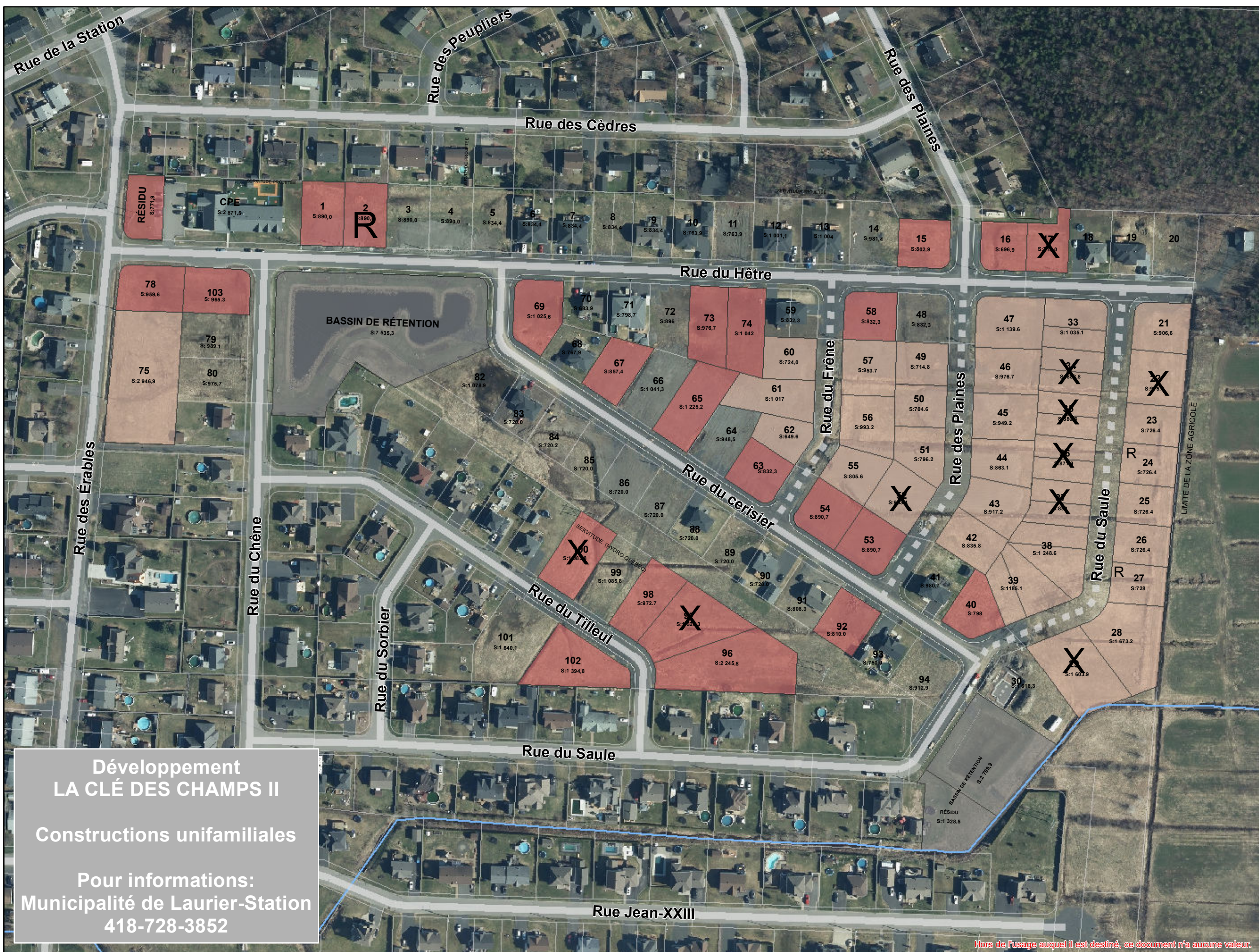
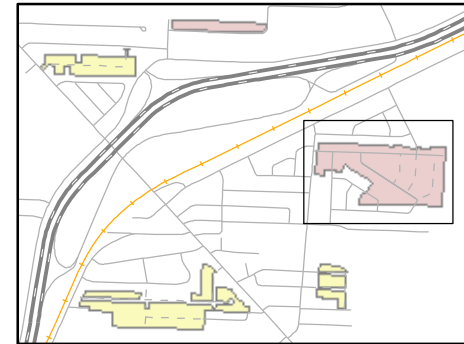







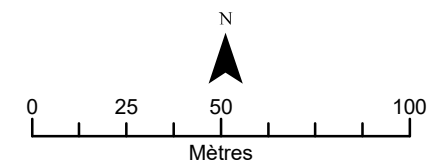


Développement résidentiel
Terrains disponibles



-  Réseau routier
-  Rue projetée
-  Cours d'eau
-  Terrains disponibles, phase I
-  Terrains disponibles, phase II
-  Bassin de rétention
-  Limite cadastrale



Date: 2022-04-28
Sources: MRC de Lotbinière, MRNF et Laurier-Station
Photo-aérienne (avril/mai 2020).

Réalisation cartographique:

**Développement
LA CLÉ DES CHAMPS II**
Constructions unifamiliales

Pour informations:
Municipalité de Laurier-Station
418-728-3852